



Making the X3 papercraft is simple!

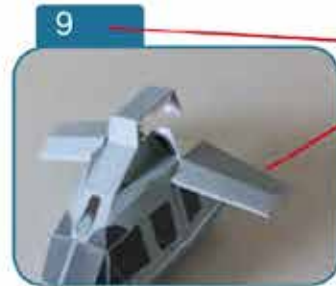
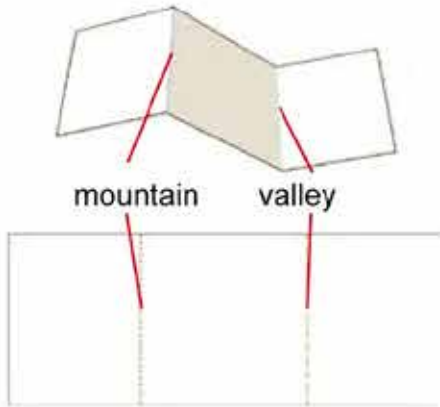
First print the model. Then cut, fold and glue it to have your very own X3!

Average time required: 5 hours.

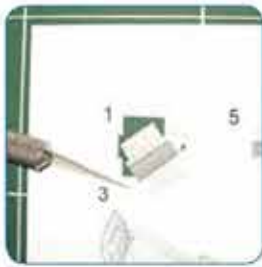


AIRBUS

Help



Step number
Picture:
Final assemblies
are illustrated



Stage 1
Cut the
parts
required in
the step..



Stage 2
Fold the
parts.
Check
mountain
and valley
foldings.



Stage 3
Glue the
parts.
The step
is finished.

Use A4 Sheets of paper
Size : 21*29.7mm)
Weight : 160 to 180 grs/M2
Avoid too thin, fragile,
and difficult to fold paper.

Metalic ruler
To be used to cut
straight lines.

Brush
To apply glue on the paper.

Cutter, blade or scissors
Blade is preferred to make
precise cuts.



White glue
Preferable because it does
not damage the ink on the
paper.

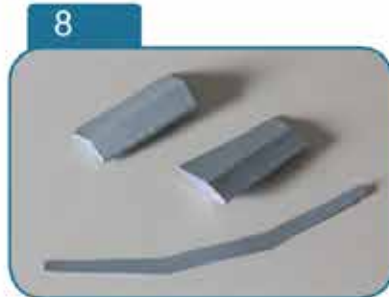
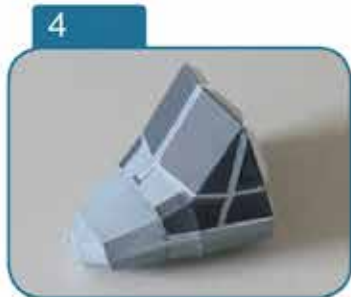
Paper knife or flat object
To fold the paper neatly.

Tweezers to handle
small parts

Felt tip pens
to color the thickness of
paper edges.

Glue a weight such as a
wire, paperclip or a coin
on the front edge.

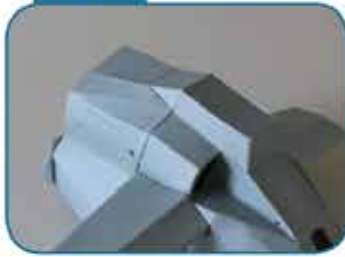
Cutting mate.



10



11



12



13



14



15



16



17



18



19



20



21



22



23



24



25



26



+



