

# WELCOME TO AEROLIA Tunisia



# From design to production of equipped fuselage structures

Revenues

\$1.5Bn

CAGR 2009-2013

10%

Employees



3500



Single Aisle



Long Range



Extra-Wide Body



Military



Bombardier Global



# AEROLIA teams alongside its Customers



**SAINT-NAZAIRE**

*Dianna Elfenantsing*

High volume detailed parts



**TOULOUSE**

*Clara Sorial*

Headquarter Engineering



**MÉAULTE**

*Assemblage automatisé*

Automated assembly Metal & Composite



**AEROLIA TUNISIE**

*Assemblage de Sous Ensemble*

Subassemblies assembly



**AEROLIA CANADA**



**AEROLIA DEUTSCHLAND**

Support au client Airbus

**XI'AN (China)**

**SACHEON (South Korea)**

**CHENGDU et SHANGHAI (China)**

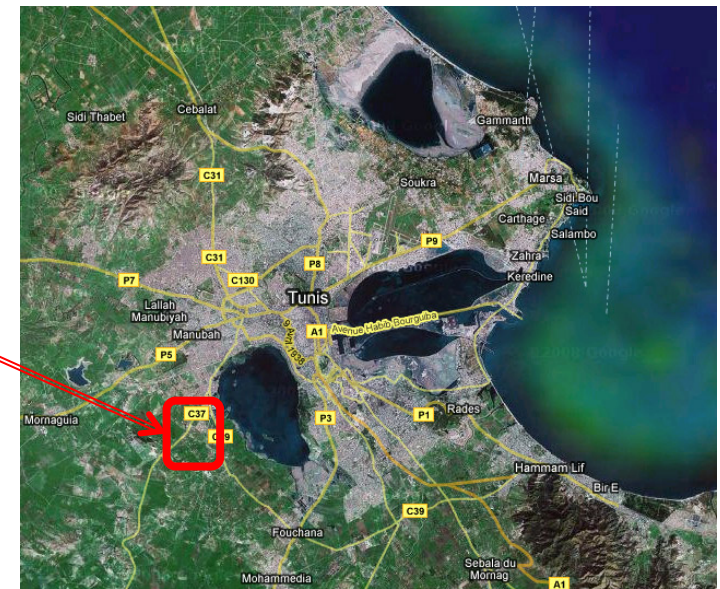
**ABU DHABI**

- Premises to offer intimacy with our Customers
- Premises to offer competitiveness
- Supply Chain Capabilities to deliver offset commitment

# AEROLIA Tunisia



- **Location** : Southern part of Tunis
- **Shop floor Surface – 2 buildings** : 10 000 m<sup>2</sup> + 3 200 m<sup>2</sup>
- **Land Surface** : 9 hectares (free space for 30 000m<sup>2</sup> shop floor)
- **Activities** : Structure sub-assembly & Aluminum parts machining



## Certificates :

- **Production Organization Approval (POA)** : June 2009
- **EN 9100** : April 2013
- **ISO 14001** : June 2013

# AEROLIA Tunisia Business Model

---

Hourly rate

25%

P&L contribution

20% Partners / 80% Aerolia

Breakeven

2014

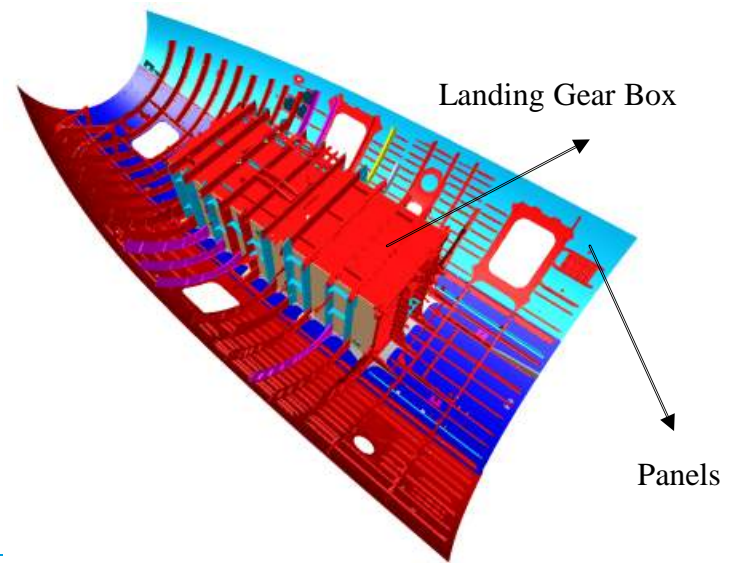
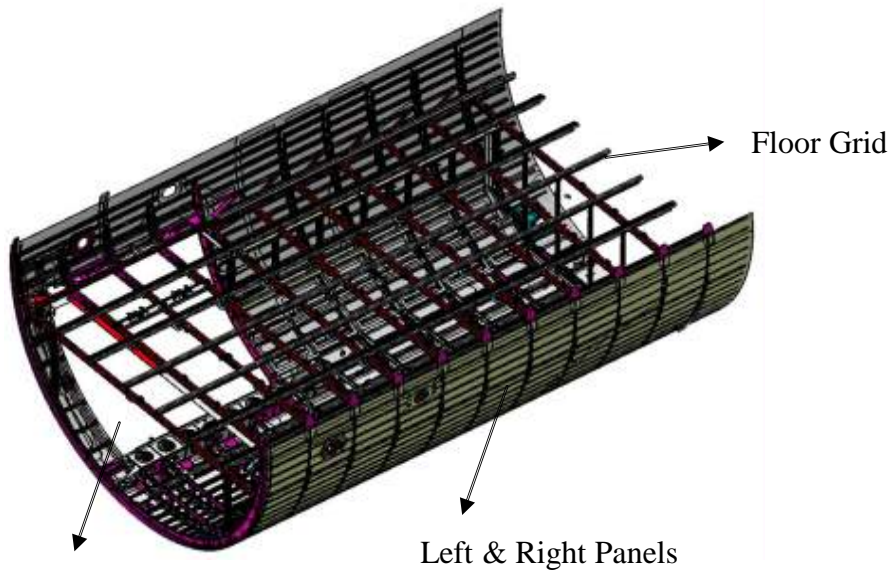
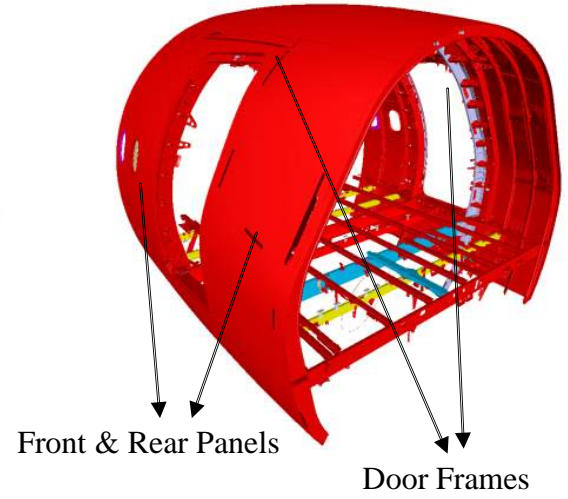
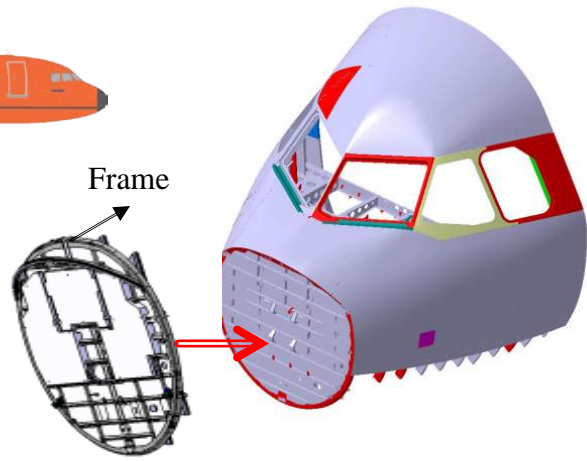
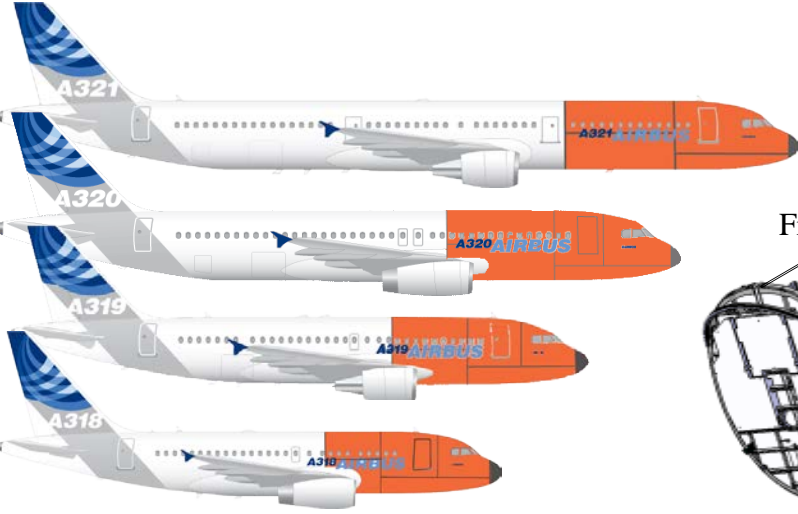
Rate of production

Not @ 100%  
Secure deliveries

Subsidies

20%

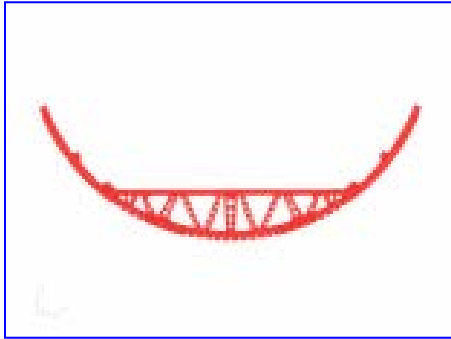
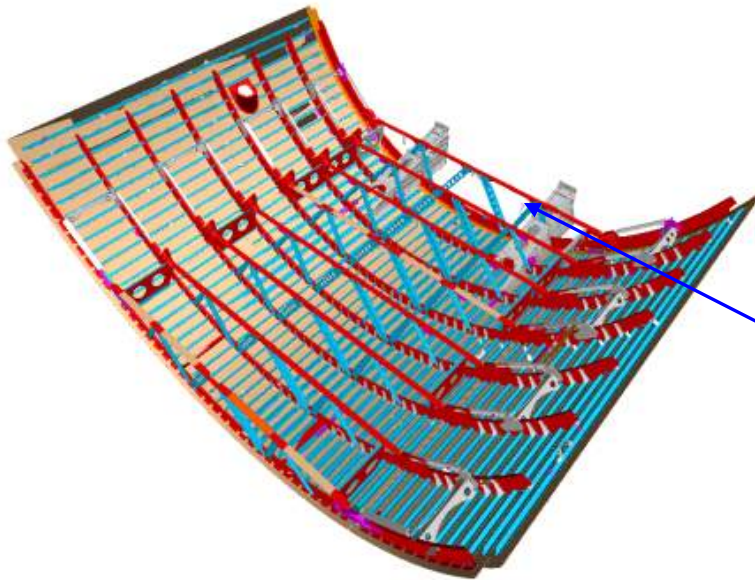
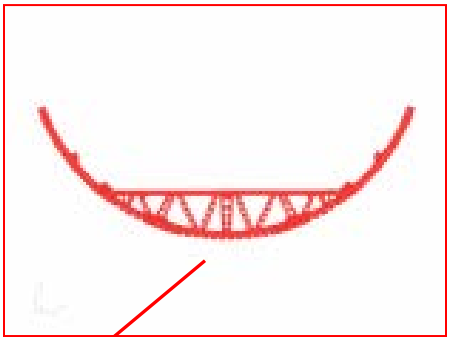
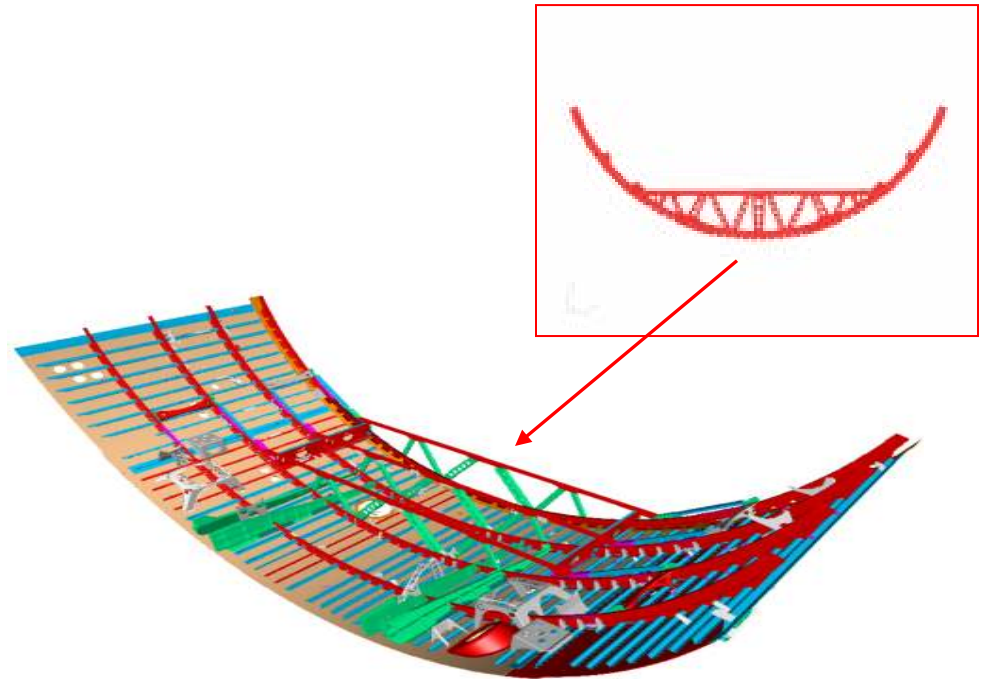
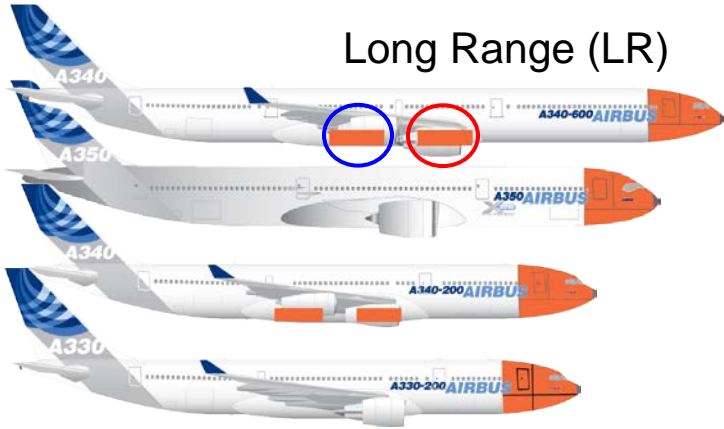
# AEROLIA Tunisia SA A320 Products



©AEROLIA S.A.S. All rights reserved. Confidential and proprietary document.

# AEROLIA Tunisia LR Products

Long Range (LR)



# ENGINEERING OFFICE

## Key Informations

DESIGN	STRESS	CONCESSIONS
PERSPECTIVES		
DDC internal Pole Modifications	Static justification Stress Simulation	Concession Pole
HEADCOUNT		
2016 → n=12 2014 → n=4 2013 → n=2 2012 → n=2	2016 → n=16 2014 → n=11 2013 → n=7 2012 → n=1	2016 → n=6 2014 → n=4 2013 → n=3 2012 → n=3
MAIN ACTIVITIES		
Modif & DQN A400M Modif & DQN A380 Studies for trade-Off	NEO Justification Files A400M Justification Files A380 Justification Files	Concessions for TU Site Task 100 to 300
KPIs		
CTD / OTD	OTD / OQD	RTO / RTT / TTA / OTD



# Aeronautical Park in Tunisia : A World First

Logistics



Material Provider



Sheet Metal Parts



Composites Subassemblies



Jigs & Tools



Mechanical Detailed Parts



Surface Treatment



➤➤ STRATEGIC ALLIANCE OF 8 PARTNERS

➤➤ Floor Surface : 200 000 sq.m

➤➤ Forecast 2014 : 1500 HC

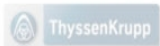
➤➤ Competitiveness Engine

➤➤ Optimized logistic flows



# AERONAUTIC PARK

## Key Informations



We aim at a fully integrated Park with :

- Lean optimized flows between the 8 partners through :

Unique logistic partner/support (flows, warehousing, milk runs, etc...)

Centralized information flows

4 daily milk runs for parts & 2 daily milk runs for material

Vendor Manage Inventories to be implemented during summer 2013

- Shared means (Specific Maintenance, Guarding, etc.)

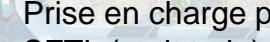
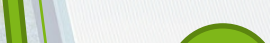
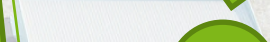
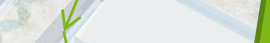
- Relation with the local Authorities

- B/C Training

- HR Policy

Usinage/ajustage

Traitement de surface



Entrée en stock SFTL



Préparation des kits



Prise en charge par SFTL (petit train)

Débit matière TKA

Distribution bord de chaîne en JIT

