



**A300**

# **Aircraft Rescue and Fire Fighting Chart ARFC**

The content of this document is the property of Airbus S.A.S.  
It is supplied in confidence and commercial security on its  
contents must be maintained.  
It must not be used for any purpose other than that for which it is  
supplied, nor may information contained in it be disclosed to un-  
authorized persons. It must not be reproduced in whole or in part  
without permission in writing from the owners of the copyright.  
Requests for reproduction of any data in this document and the  
media authorized for it must be addressed to Airbus.  
© Airbus S.A.S. 2002. All rights reserved.

**AIRBUS S.A.S.**  
**31707 BLAGNAC CEDEX, FRANCE**  
**CUSTOMER SERVICES**  
**TECHNICAL DATA SUPPORT AND SERVICES**  
**PRINTED IN FRANCE**  
**©AIRBUS S.A.S. 2002**  
**ALL RIGHTS RESERVED**

---

**AN EADS COMPANY**

 **A300 B and C Models**  
AIRCRAFT RESCUE AND  
FIRE FIGHTING CHART

NOTE

THIS CHART GIVES THE GENERAL LAYOUT OF THE A300 ALL MODELS STANDARD VERSION.  
THE NUMBER AND ARRANGEMENT OF THE INDIVIDUAL ITEMS VARY WITH THE CUSTOMERS.

ISSUED BY:

AIRBUS S.A.S.  
CUSTOMER SERVICES  
TECHNICAL DATA SUPPORT AND SERVICES  
31707 BLAGNAC CEDEX  
FRANCE

REVISION DATE: JUNE 2007  
REFERENCE : A\_RF\_000000\_1\_A300000

 **A300 B and C Models**  
AIRCRAFT RESCUE AND FIRE FIGHTING CHART

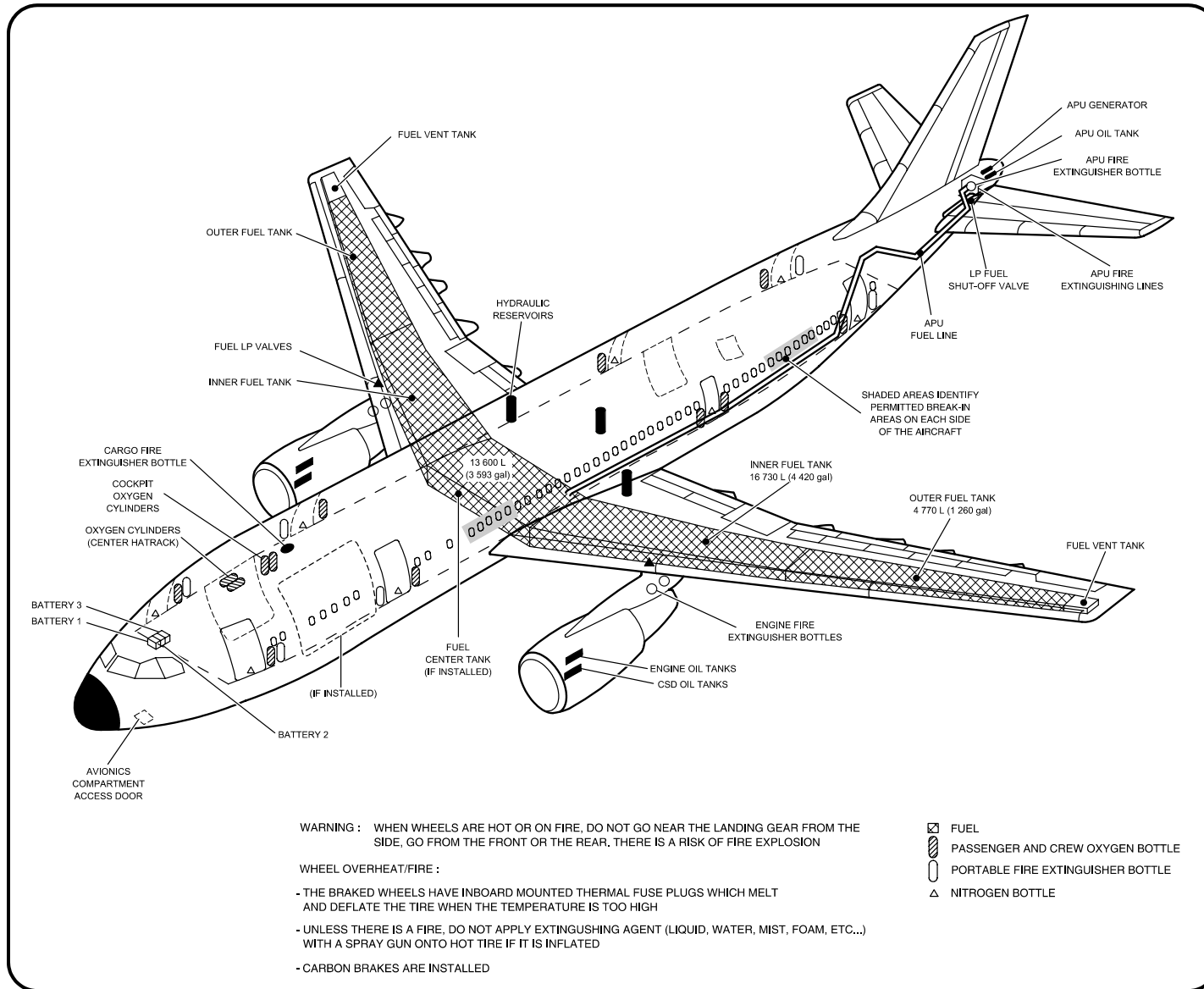
 **A300 B and C Models**  
AIRCRAFT RESCUE AND  
FIRE FIGHTING CHART

TABLE OF CONTENTS

Page 1	Highly Flammable Materials and Hazardous Components - Location
Page 2	Composite Materials - Location
Page 3	Landing Gear Ground Lock Safety Pin - Installation
Page 4	Interphone Jack Sockets - Location
Page 5	Evacuation/Escape Slide/Raft - Location
Page 6	Passenger/Crew Doors and Emergency Exits - Opening
Page 7	Cargo Doors - Opening
Page 8	Structural Break-in Points - Principle
Page 9	Batteries and Control Panel - Location
Page 10	Emergency Exit Light Control Panel - Location
Page 11	Upper Deck Cargo Door - Opening
Page 12	Engine and APU Controls and FIRE Panels - Location
Page 13	Bulk Cargo Compartment Door Control
Page 14	APU Compartment Access
Page 15	Aircraft Ground Clearances

# A300 B and C Models



## AIRCRAFT RESCUE AND FIRE FIGHTING CHART

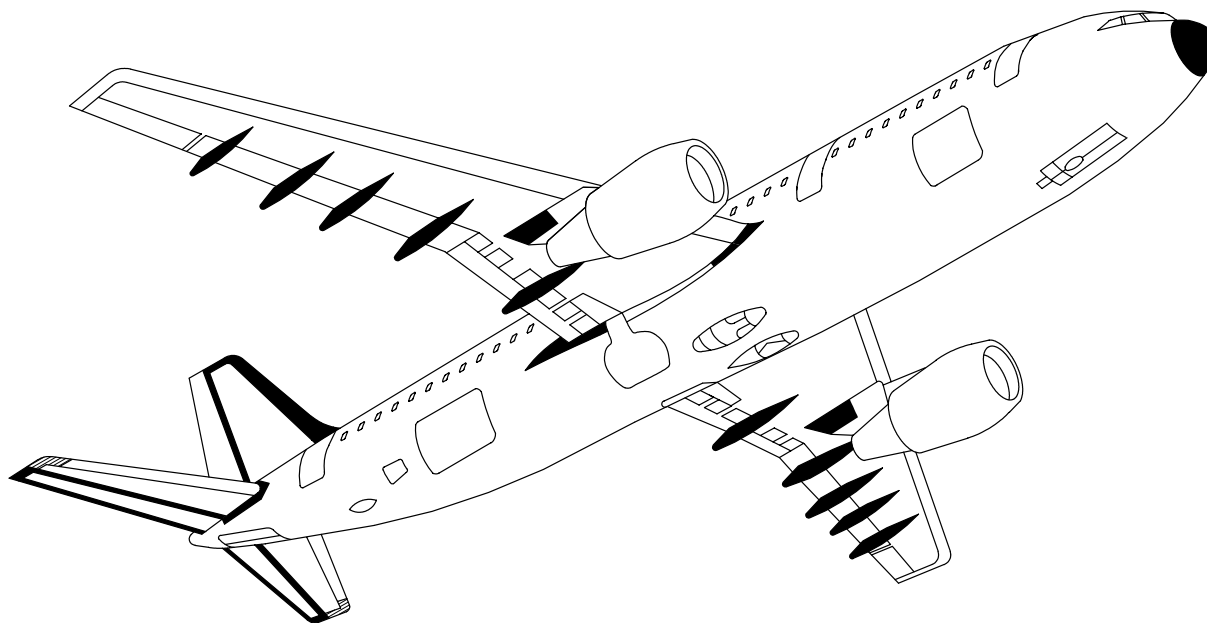


Highly Flammable Materials and Hazardous Components - Location

# **A300 B and C Models**

## AIRCRAFT RESCUE AND FIRE FIGHTING CHART

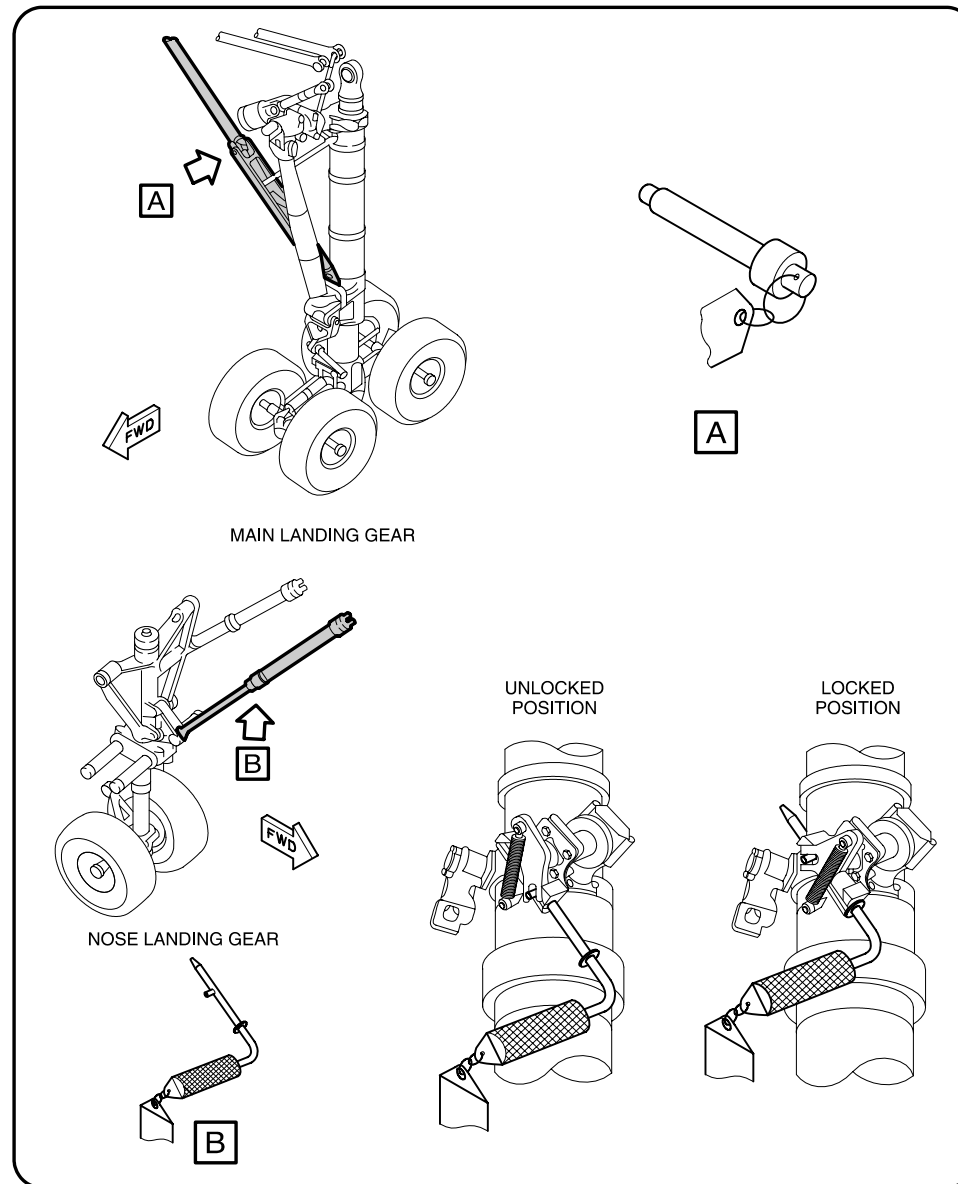
-  Carbon Fiber Reinforced Plastic (CFRP)
-  Glass Fiber Reinforced Plastic (GFRP)



Composite Materials - Location

# A300 B and C Models

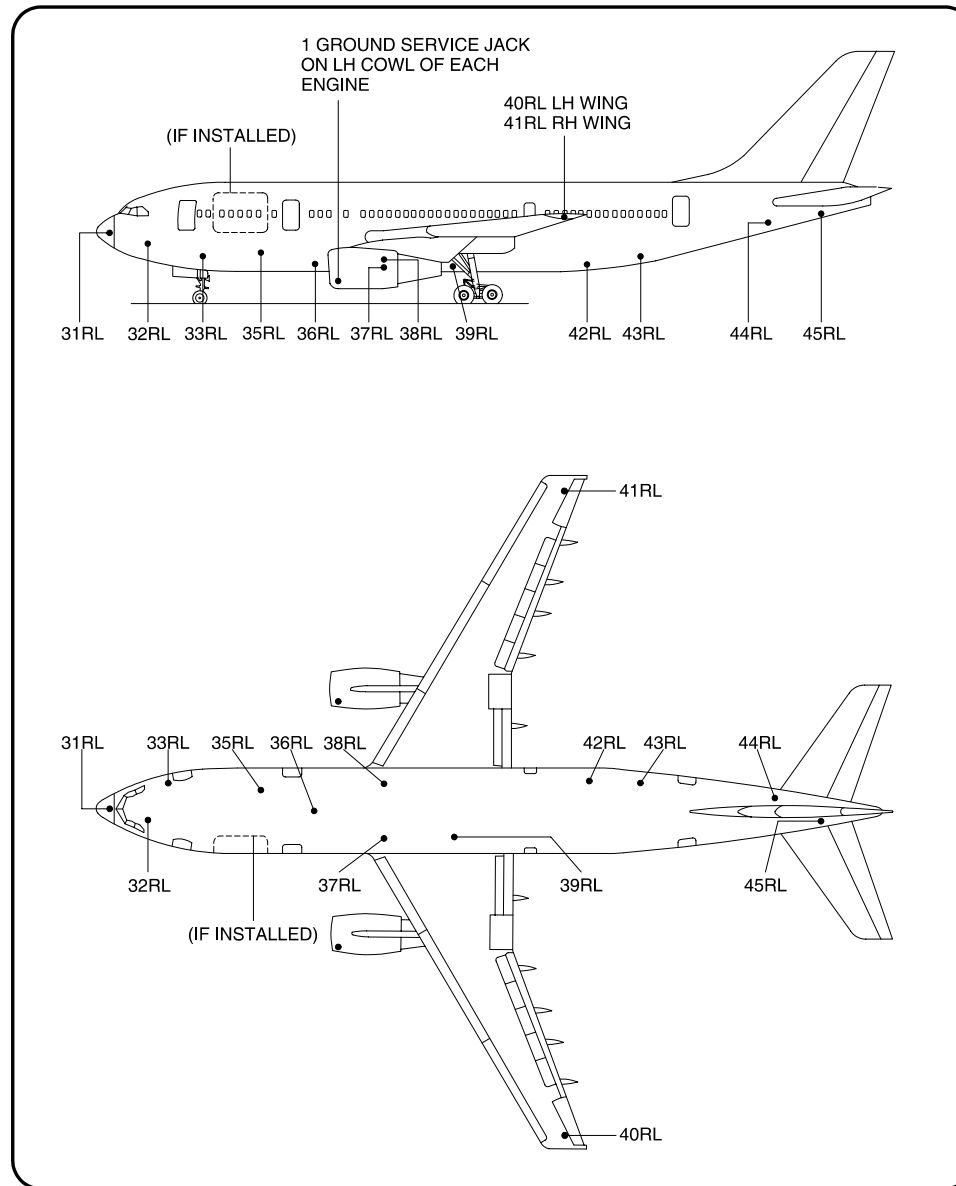
## AIRCRAFT RESCUE AND FIRE FIGHTING CHART



Landing Gear Ground Lock Safety Pin - Installation

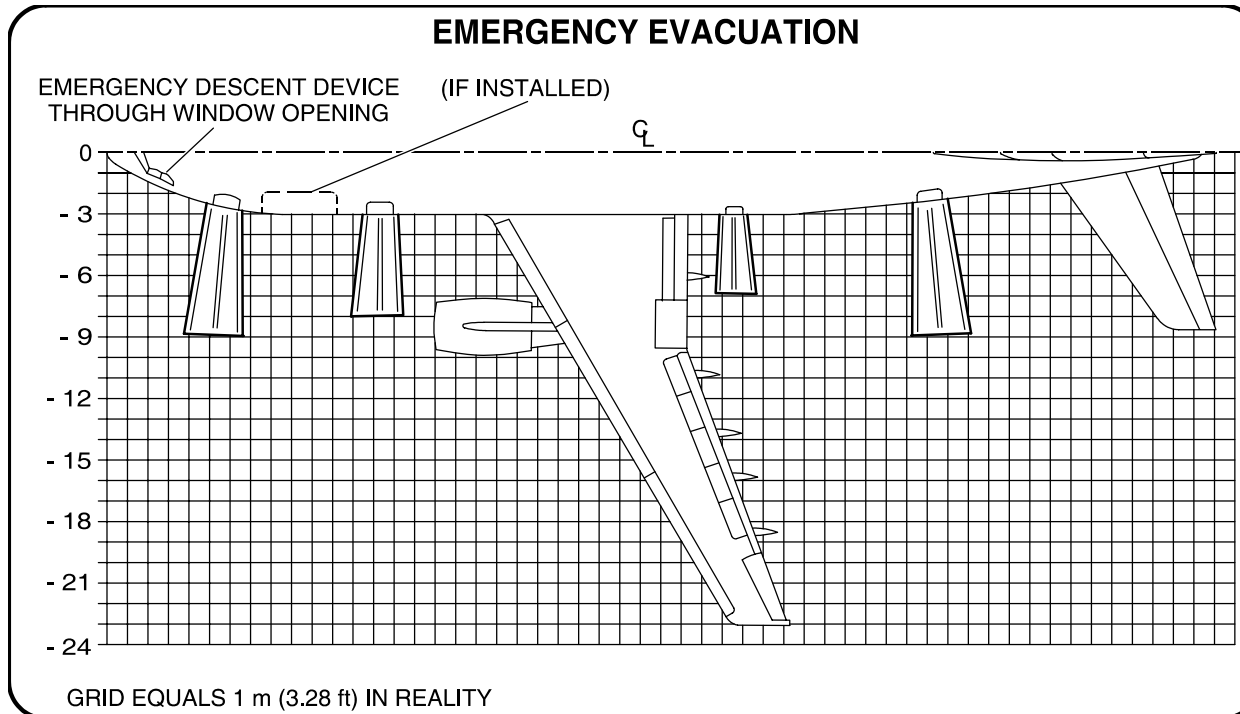
# A300 B and C Models

## AIRCRAFT RESCUE AND FIRE FIGHTING CHART



Interphone Jack Sockets - Location

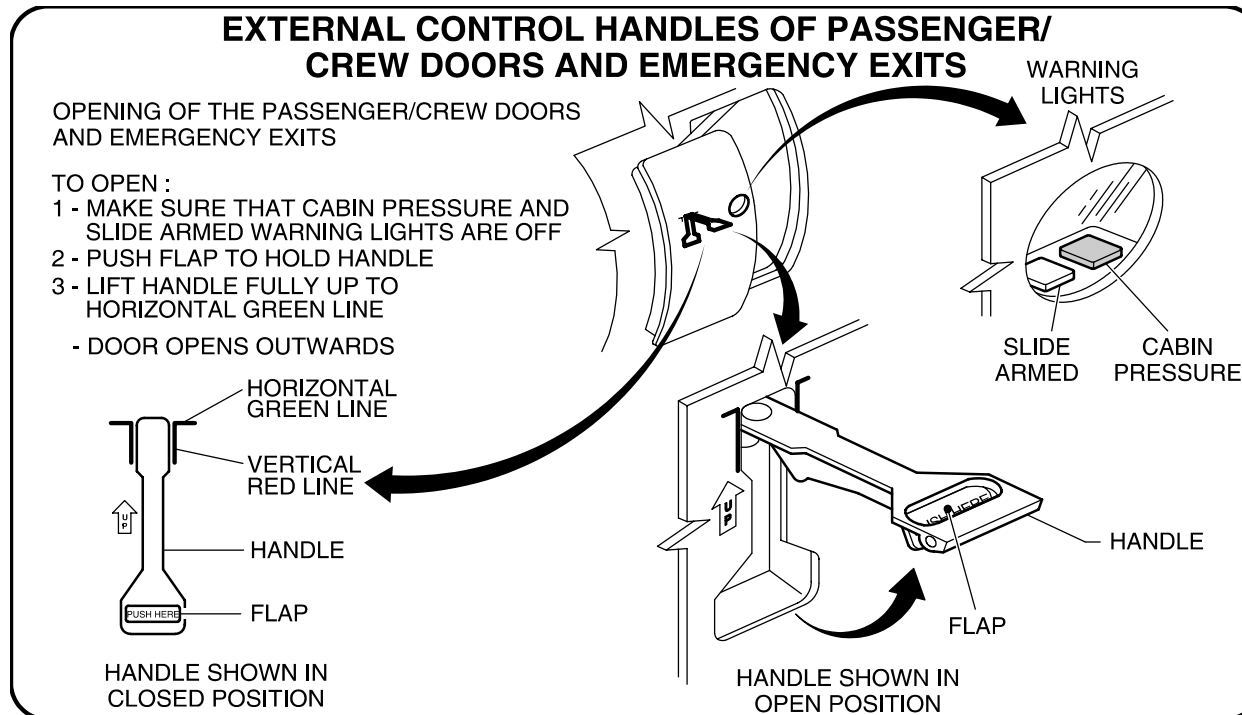
**A300 B and C Models**  
AIRCRAFT RESCUE AND  
FIRE FIGHTING CHART



Evacuation/Escape Slide/Raft - Location

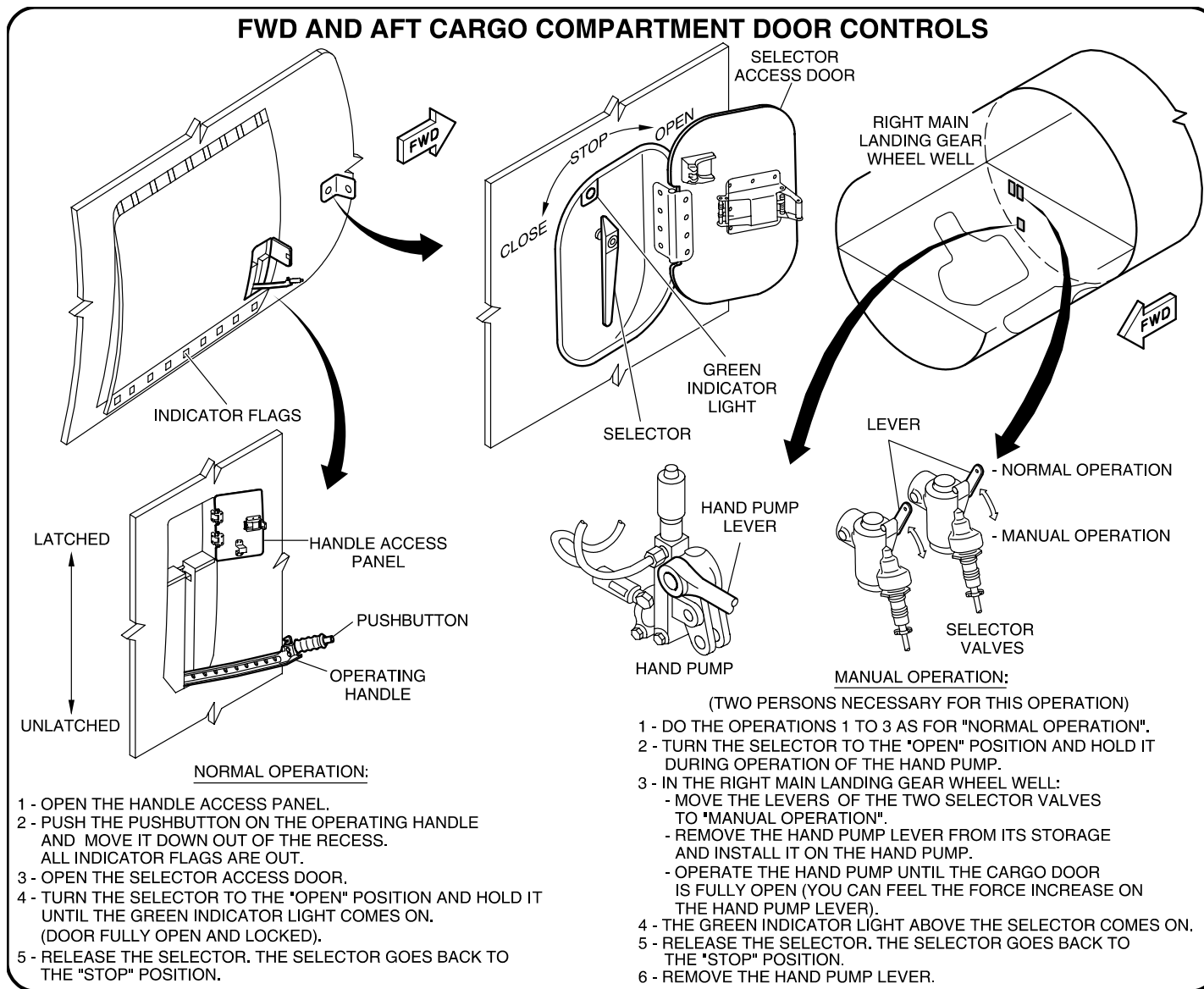


**A300 B and C Models**  
**AIRCRAFT RESCUE AND**  
**FIRE FIGHTING CHART**



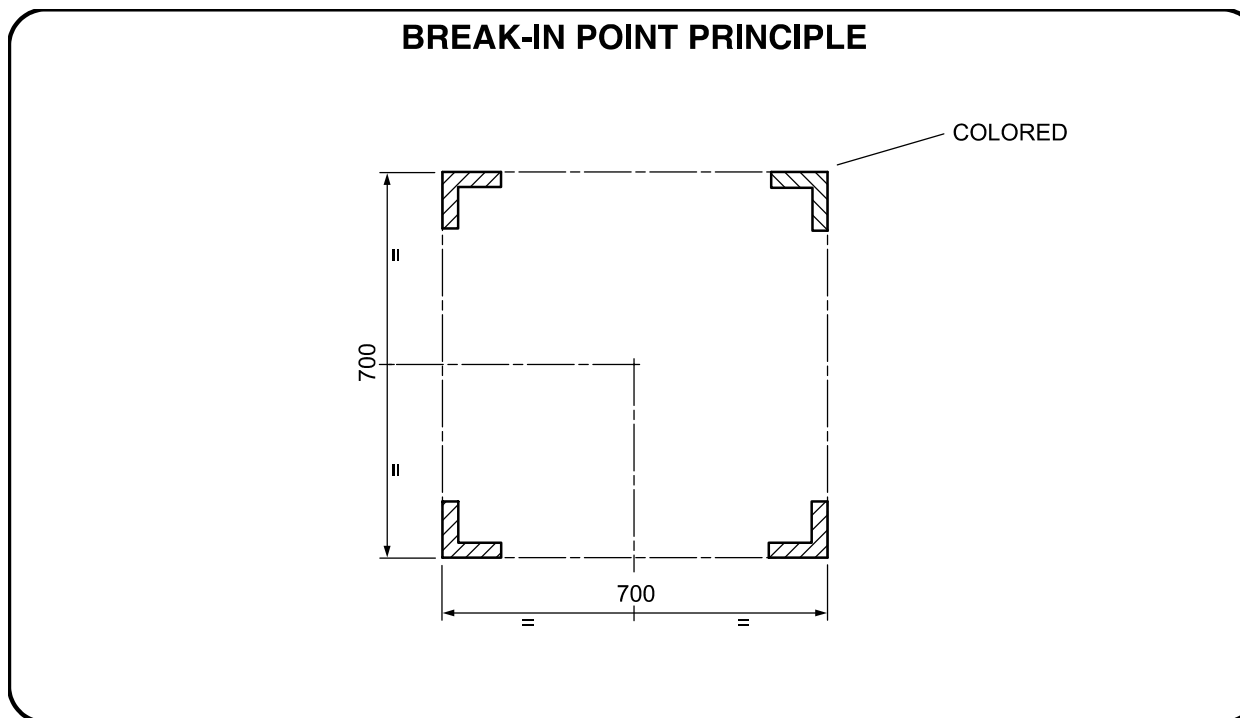
# A300 B and C Models

## AIRCRAFT RESCUE AND FIRE FIGHTING CHART



Cargo Doors - Opening

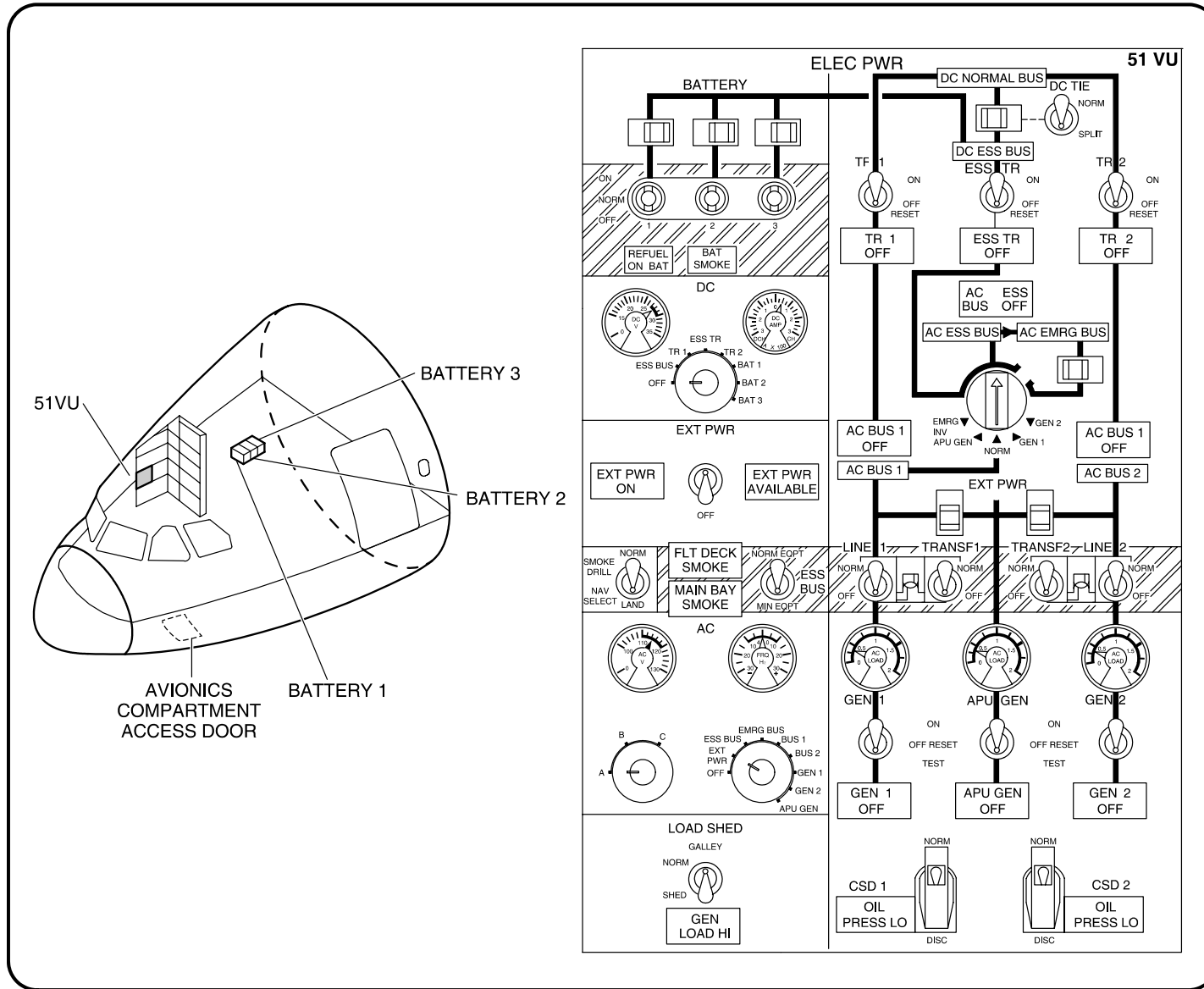
**A300 B and C Models**  
AIRCRAFT RESCUE AND  
FIRE FIGHTING CHART



Structural Break-in Points - Principle

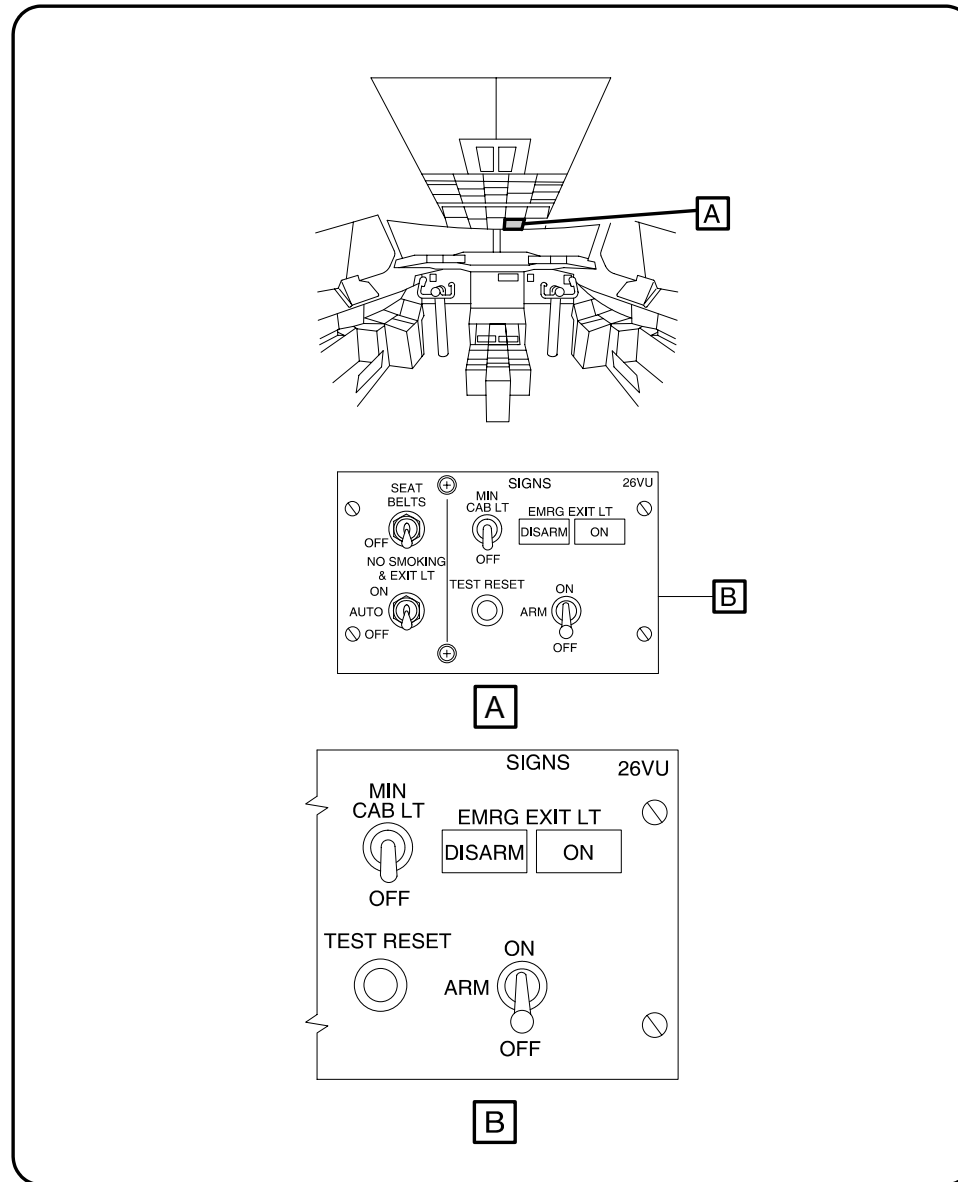
# A300 B and C Models

## AIRCRAFT RESCUE AND FIRE FIGHTING CHART



Batteries and Control Panel - Location

**A300 B and C Models**  
**AIRCRAFT RESCUE AND  
 FIRE FIGHTING CHART**

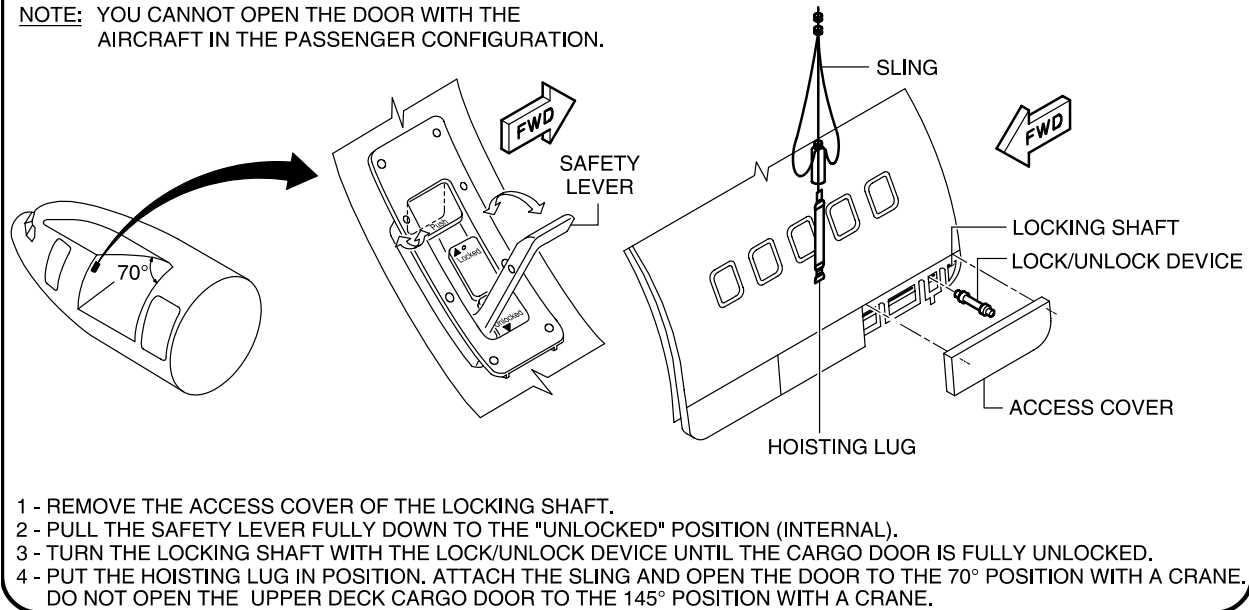


Emergency Exit Light Control Panel - Location

**A300 B and C Models**  
AIRCRAFT RESCUE AND  
FIRE FIGHTING CHART

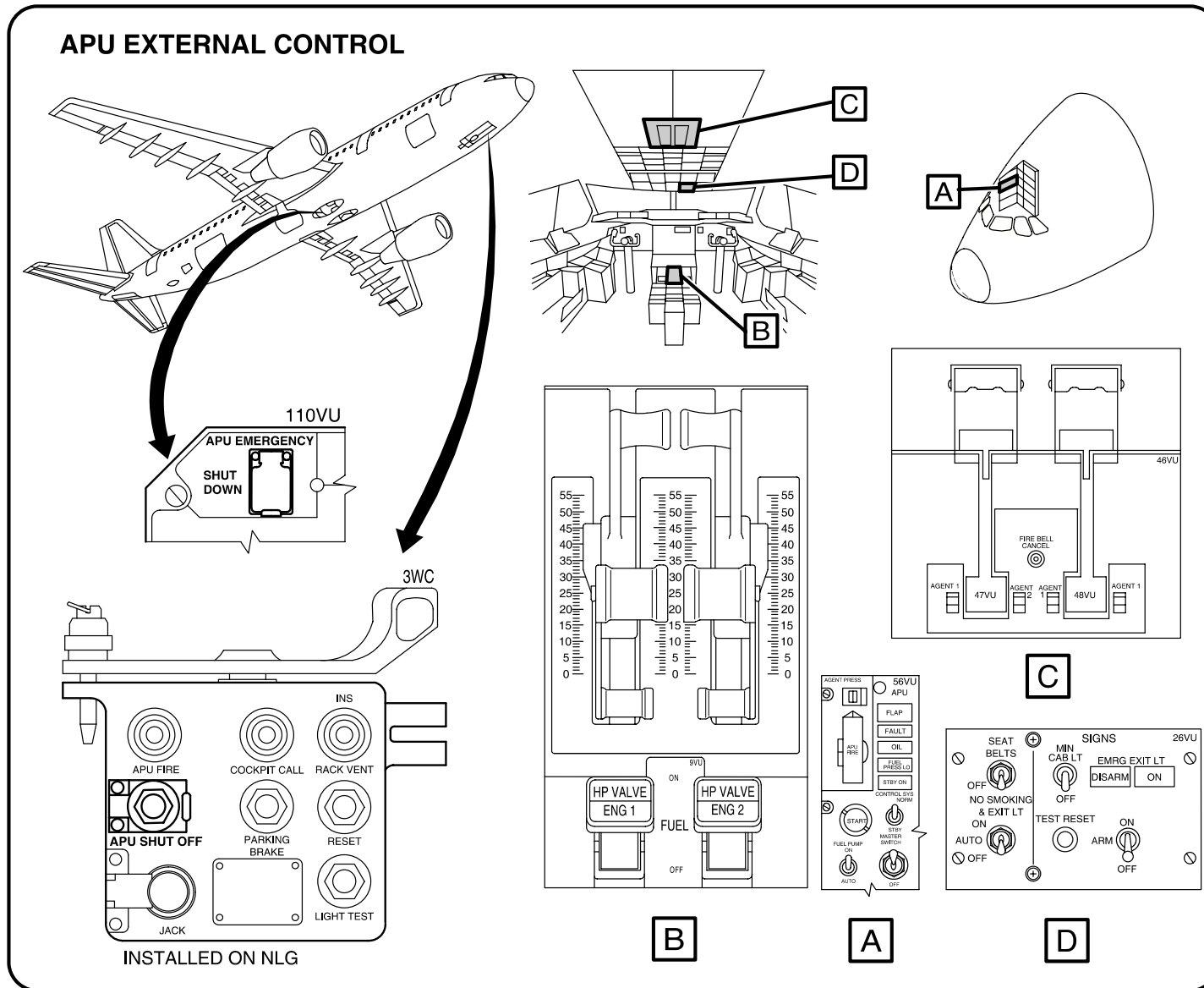
**EXTERNAL MANUAL OPERATION OF UPPER DECK CARGO DOOR  
(FOR A300 MODEL C4 VERSION ONLY)**

**NOTE:** YOU CANNOT OPEN THE DOOR WITH THE AIRCRAFT IN THE PASSENGER CONFIGURATION.



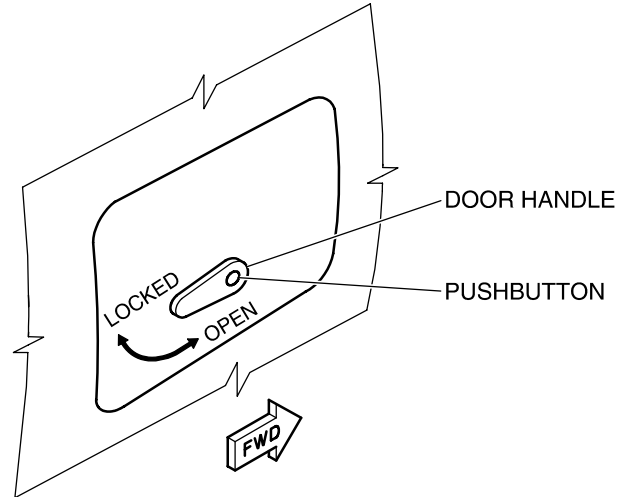
# A300 B and C Models

## AIRCRAFT RESCUE AND FIRE FIGHTING CHART



**A300 B and C Models**  
AIRCRAFT RESCUE AND  
FIRE FIGHTING CHART

**BULK CARGO COMPARTMENT DOOR CONTROL**



OPERATION :

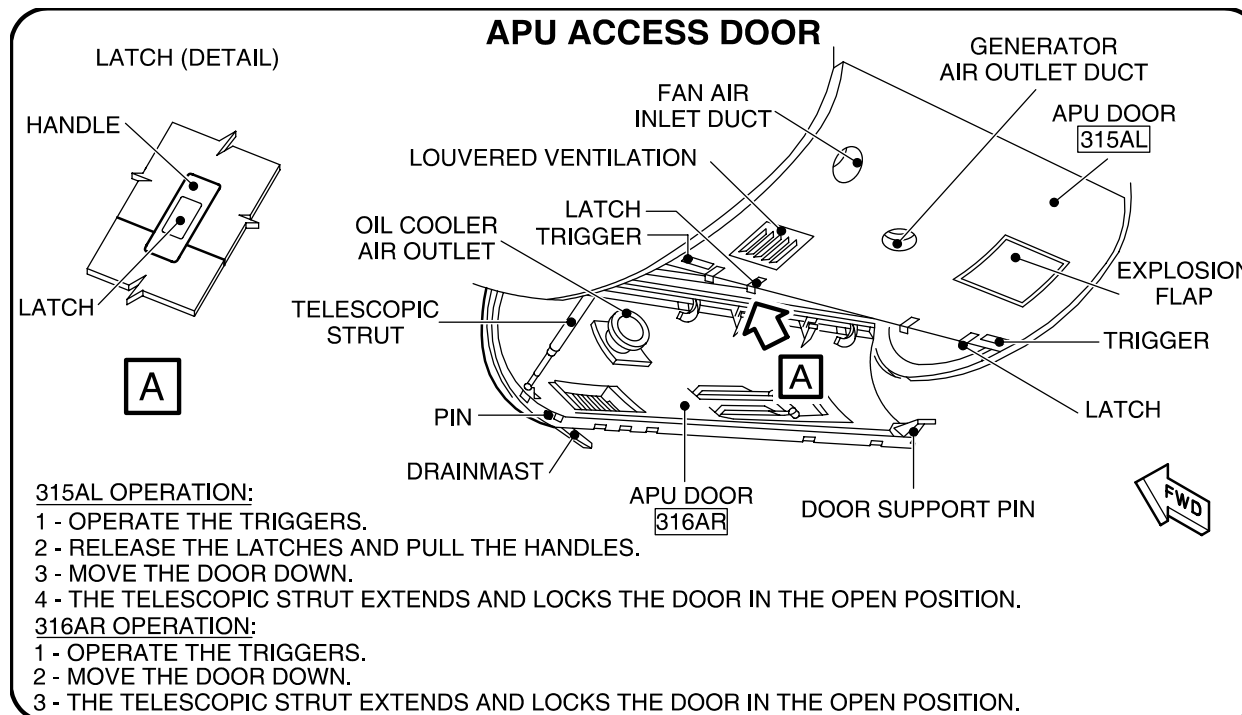
- 1 - PUSH THE PUSHBUTTON TO RELEASE THE DOOR HANDLE.
- 2 - MOVE THE HANDLE DOWN TO THE "OPEN" POSITION.
- 3 - PUSH THE BULK CARGO DOOR IN. PUT THE DOOR HANDLE BACK IN THE "LOCKED" POSITION AND INTO THE RECESS.
- 4 - PUSH THE BULK DOOR UP UNTIL THE HOOK ENGAGES.

Bulk Cargo Compartment Door Control



# A300 B and C Models

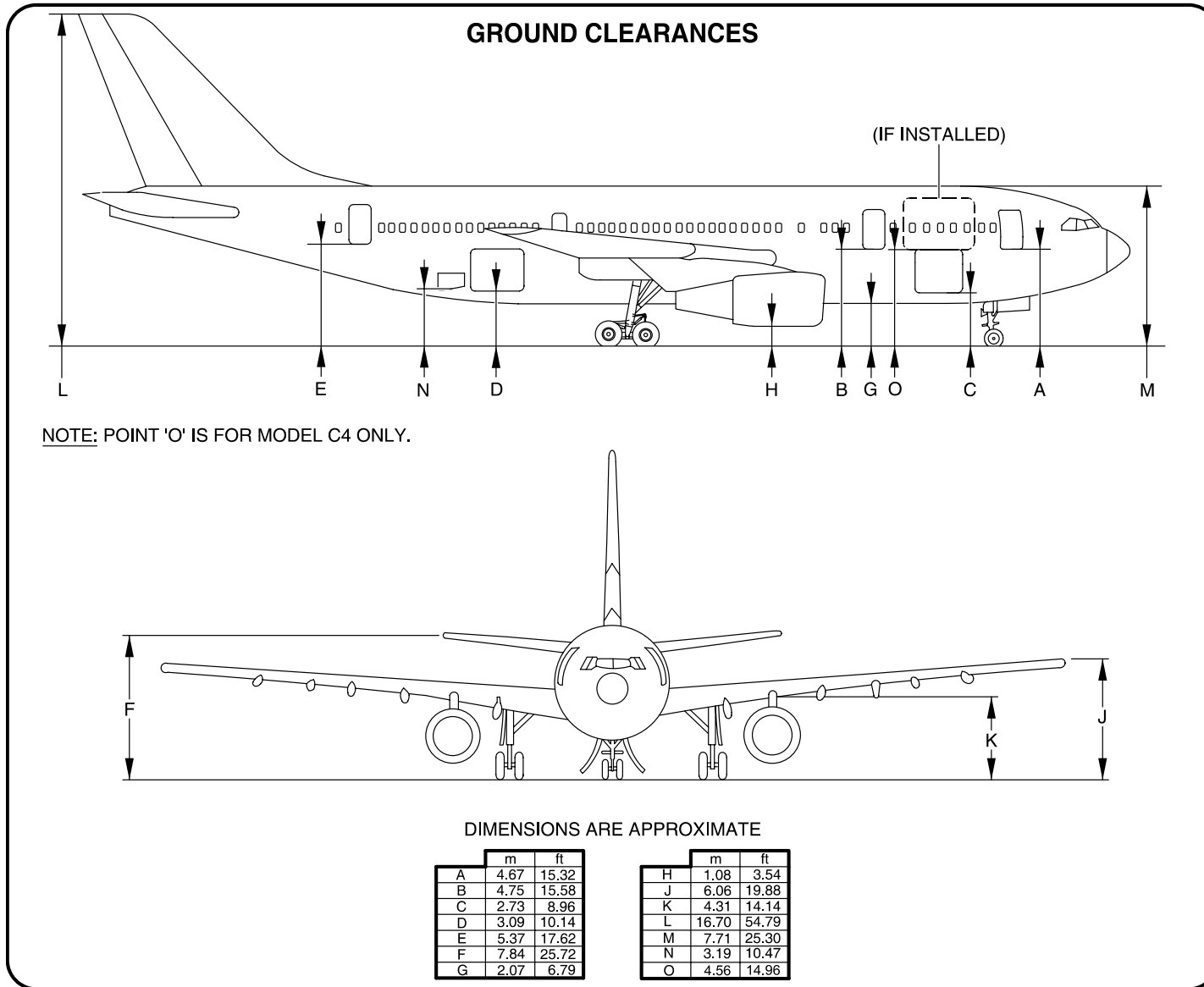
## AIRCRAFT RESCUE AND FIRE FIGHTING CHART



APU Compartment Access

# A300 B and C Models

## AIRCRAFT RESCUE AND FIRE FIGHTING CHART



Aircraft Ground Clearances