



DEFENCE AND SPACE

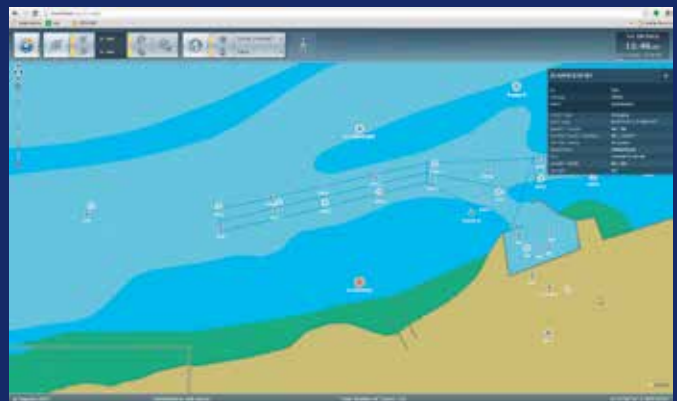
Maritime Surveillance

STYRIS WEB

STYRIS[®] applying a scientific approach to design

Overview

- The access of STYRIS data has been made easier with the intuitive STYRIS Web interface
- Authorized users can remotely monitor the traffic in the area of interest from anywhere in the world
- STYRIS Web is compatible with main web browsers (MS Internet Explorer, Mozilla Firefox, Google Chrome)

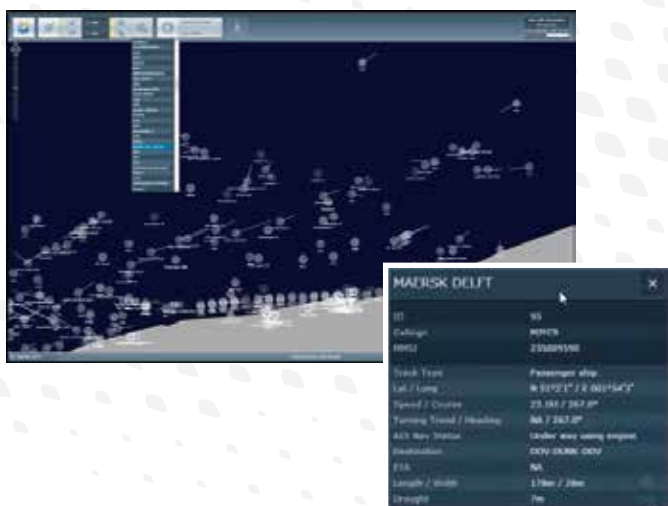
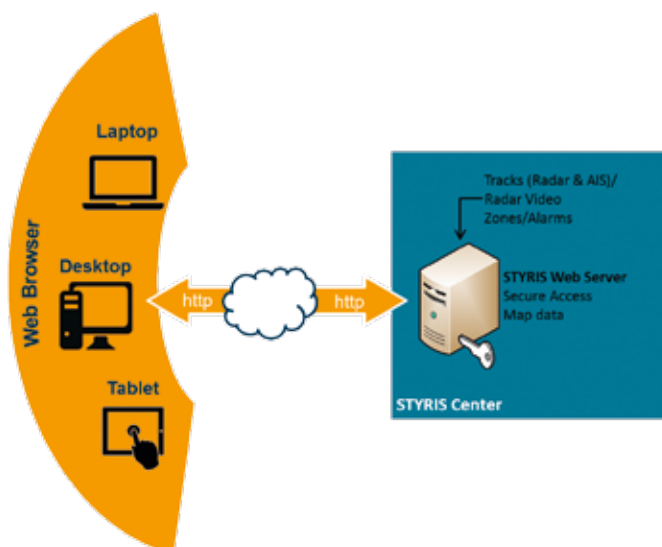


Your Operational Picture on a web browser

STYRIS WEB

Functional Architecture

- STYRIS track server provides real-time track information (position, identification, course and speed) to the STYRIS Web
- To enrich the traffic image, it is also possible to get nautical chart from a “Map server”
- The traffic view displays moving tracks with their symbol and all available information
- STYRIS Web is accessible through login/password security protection



Technical Description

- Operational picture compilation:
 - AIS tracks
 - Radar tracks
 - Radar raw video
 - Traffic alarms
 - Maritime charts
 - Zones
 - Track table
 - Track plotting
 - Track details (ship name, call sign, MMSI number, etc)
- Selection of predefined viewports
- Electronic range and bearing measurement tool
- Possibility to search vessel by track information
- Replay previously archived traffic situations
- Possibility to filter nautical chart information

Browser compatibility	Version
Microsoft Internet Explorer	9 or higher
Mozilla Firefox	21 or higher
Google Chrome	25 or higher
Apple Safari	5 or higher
WebKit	4.2 or higher

AIRBUS

Airbus Defence and Space
 9 rue Louis Rameau – B.P. 70101
 95873 Bezons Cedex
 France

Airbus Defence and Space
 Hanna-Kunath-Strasse 3
 28199 Bremen
 Germany

Airbus Defence and Space
La Ciotat Test Facilities
 ZI Athelia 2, 220 impasse du Serpolet
 13704 La Ciotat Cedex
 France